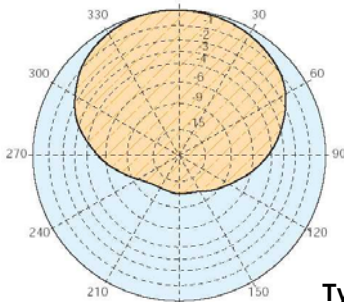
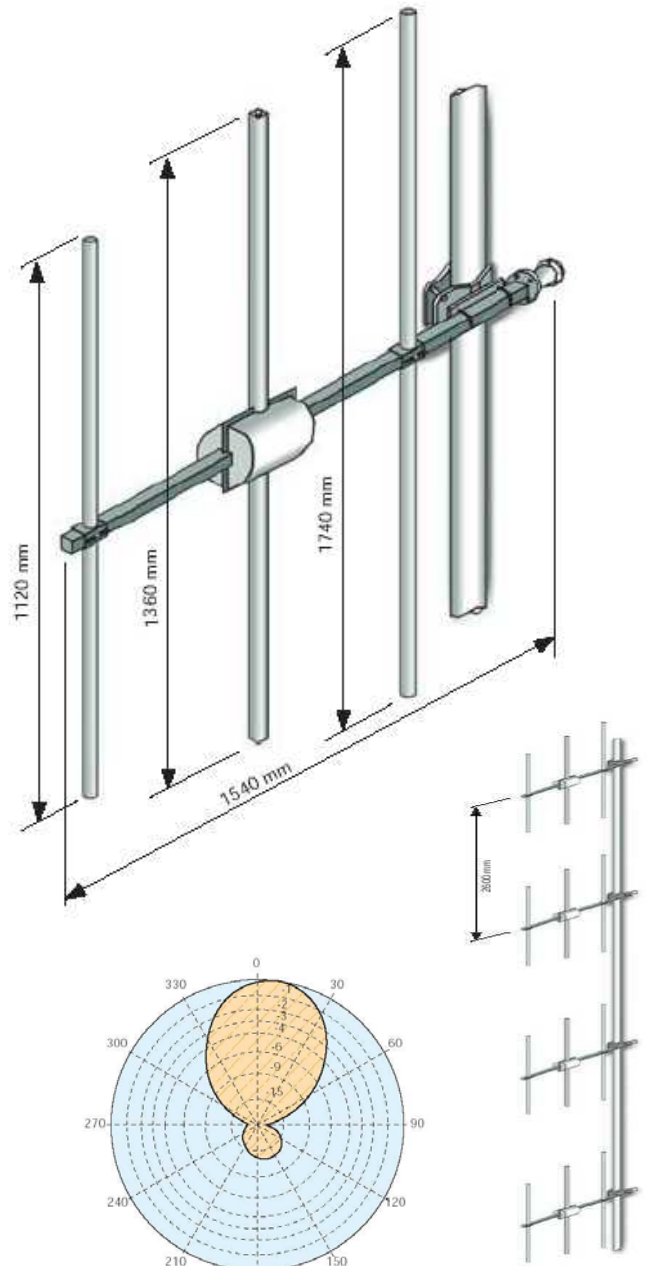


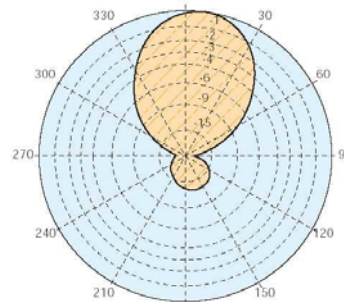
TFL3Y

Vertically or Horizontally Polarized, 87.5 - 108 MHz, Directional, Stainless Steel, Broadband FM Yagi Antenna

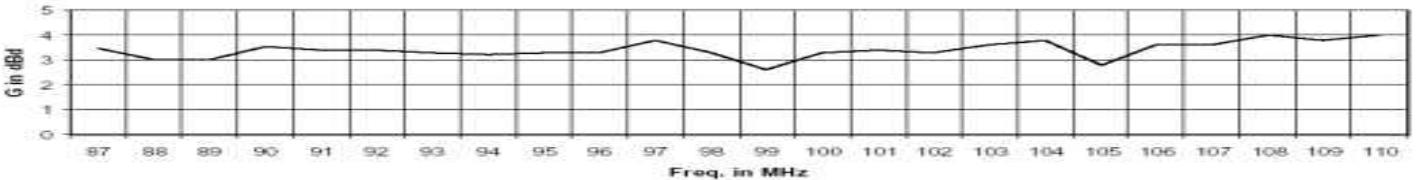
- Lightning Protection – All metal parts DC grounded
- Null fill, beam tilt & custom applications upon request
- Pressurization available upon request
- Optional mini white fiberglass feedpoint radome available
- Impedance: 50 Ohm • VSWR: < 1.3: 1
- Input connector: (each bay) "N" Type fem. or 7/8" Flange
- Typical ctr. to ctr. distance: (multi-bays) 8 ½ ft (2.6 m.)
- Pattern: Directional
- Bracket: can clamp on 1" to 4 3/16" (25mm to 110mm) diam.
- Typical weight: (1 bay) 34 Lbs / 15.5 Kg (boxed)
- Approx size: (1 bay) 60¾" x 68½" x 2½" (1540mm x 1740mm x 63mm)
- Typical boxed size: (1 bay) 72"x 72" x 6" (1828mm x 1828mm x 152mm)



Typical mid-band radiation pattern
< Horizontal
Vertical >
(each bay)



Typical gain (dBd) across the FM Band:



Number of bays	Gain (dBd)	Power Gain	Gain dBi	Pwr Rating w/ "N" type	Pwr Rating w/ 7/8" Fl.	Vertical Height ft. / m.	Req. (*) Vertical Tower Space ft. / m.	Est. Wind Load Lbs / Kg
1	4	2.5	6.1	800 W	3.5 kW	5' 8" / 1.74	14' 4" / 4.37	117.5 / 53.4
2	7	5.0	9.1	1.5 kW	6 kW	14' 3" / 4.34	22' 10" / 6.97	235 / 106.8
3	8.8	7.5	10.9	2 kW	9 kW	22' 9" / 6.94	31' 5" / 9.57	352.4 / 160.2
4	10	10.0	12.1	3 kW	12 kW	31' 3" / 9.54	39' 11" / 12.17	470 / 213.4
5	11	12.5	13.1	3.6 kW	15 kW	39' 10" / 12.14	48' 5" / 14.77	587.4 / 267
6	11.8	15.0	13.9	4.4 kW	18 kW	48' 4" / 14.74	57' / 17.37	704.9 / 320.4
8	13	20.0	15.1	5.5 kW	24 kW	65' 5" / 19.94	74' / 22.57	939.8 / 427.2
12	14.8	30.1	16.9	8 kW	36 kW	99' 6" / 30.34	108' 2" / 32.97	1409.8 / 640.8

Values shown are typical. Actual values may vary with each specific installation. Attenuation of connecting cables not taken into account. Gain will be affected if null fill, beam tilt or special wavelength spacing is required. If antenna is side mounted, the supporting structure will have a slight effect on radiation pattern and on VSWR. Contact us with details of your installation for customized data. (*) Total tower space recommended allows 5 ft (1.5 m) of clear tower space above and below the mounting area to protect from pattern interference by other antennas. Estimated wind loads are calculated w/o radome per EIA Standard RS-222-C for 100 mph (160 kph)