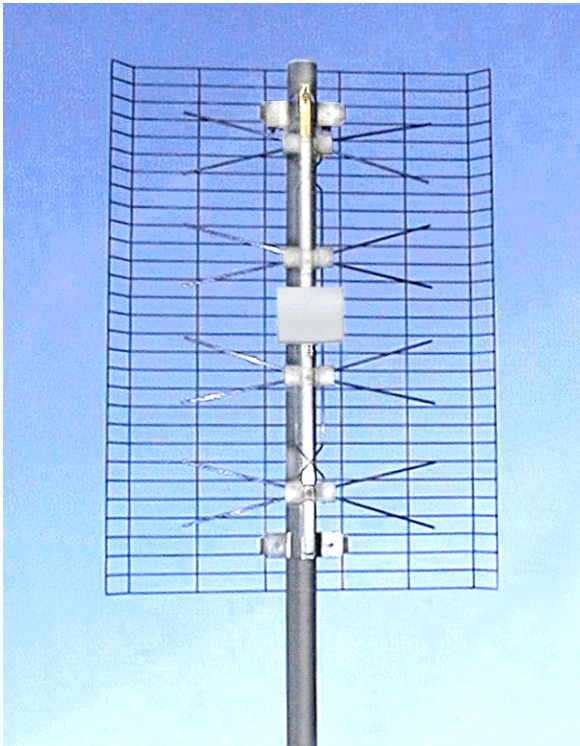


## STL GRID

*Radio STL  
Broadband Directional Antenna  
940 - 960 MHz*



- Low wind load construction
- Up to 50 Watts input power
- 13.5 dB Gain in STL Band
- N female input connector
- Galvanized Steel mounting bracket included
- Frequency Range: 940-960 MHz
- Compact and lightweight for shipping and ease of field assembly

**Impedance:** 50 Ohm

**Pattern:** Directional

**VSWR:** < 1: 1.2

**Input connector:** "N" Type female

**Power rating:** 50 W

**Gain:** 13.5 dBd, 15.6 dBi

**Power gain:** (for one antenna) 22.4

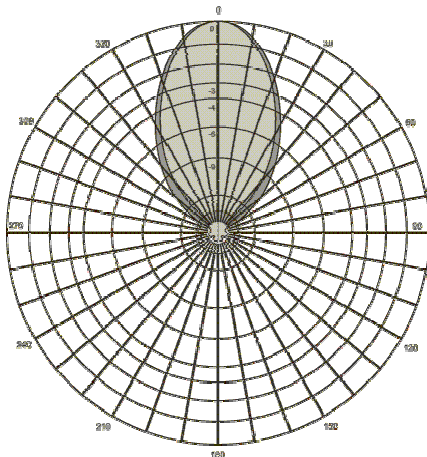
**Construction:** Galvanized steel

**Bracket:** can clamp on supports 1" to 2 1/2" (25 mm to 63 mm) diameter

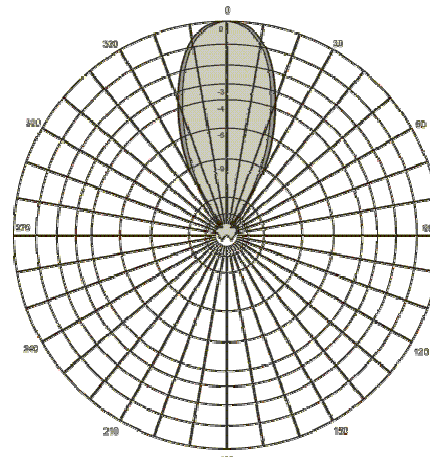
**Approximate dimensions:** 29"x 20 1/2" x 5 1/2" (736mm x 520mm x 140mm)

**Typical shipping size:** 35" x 25" x 10" (890mm x 635mm x 254mm)

**Typical weight:** 4 Lbs / 1.8 Kg (boxed)



Typical  
Horizontal  
Pattern



Typical  
Vertical  
Pattern